

TOP BILLING

JUNE 2007
R21.95 (incl. vat)
Namibia NS19.95
Other countries R17.50

WHAT'S ON THE CARDS?

Play with your food

SASSY, SEXY AND 79

Vidal Sassoon's
love pad

STEP IT UP

Gardening against
the odds

JANEZ & AIDAN

Lights, gazebos and
kitchen action

THE HOTTEST FIREPLACES

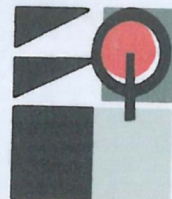
— NOW WE'RE TALKING!

THE HOUSE THE ARCHITECT

...for himself



PLEASE DO NOT REMOVE
FROM OFFICE
See page



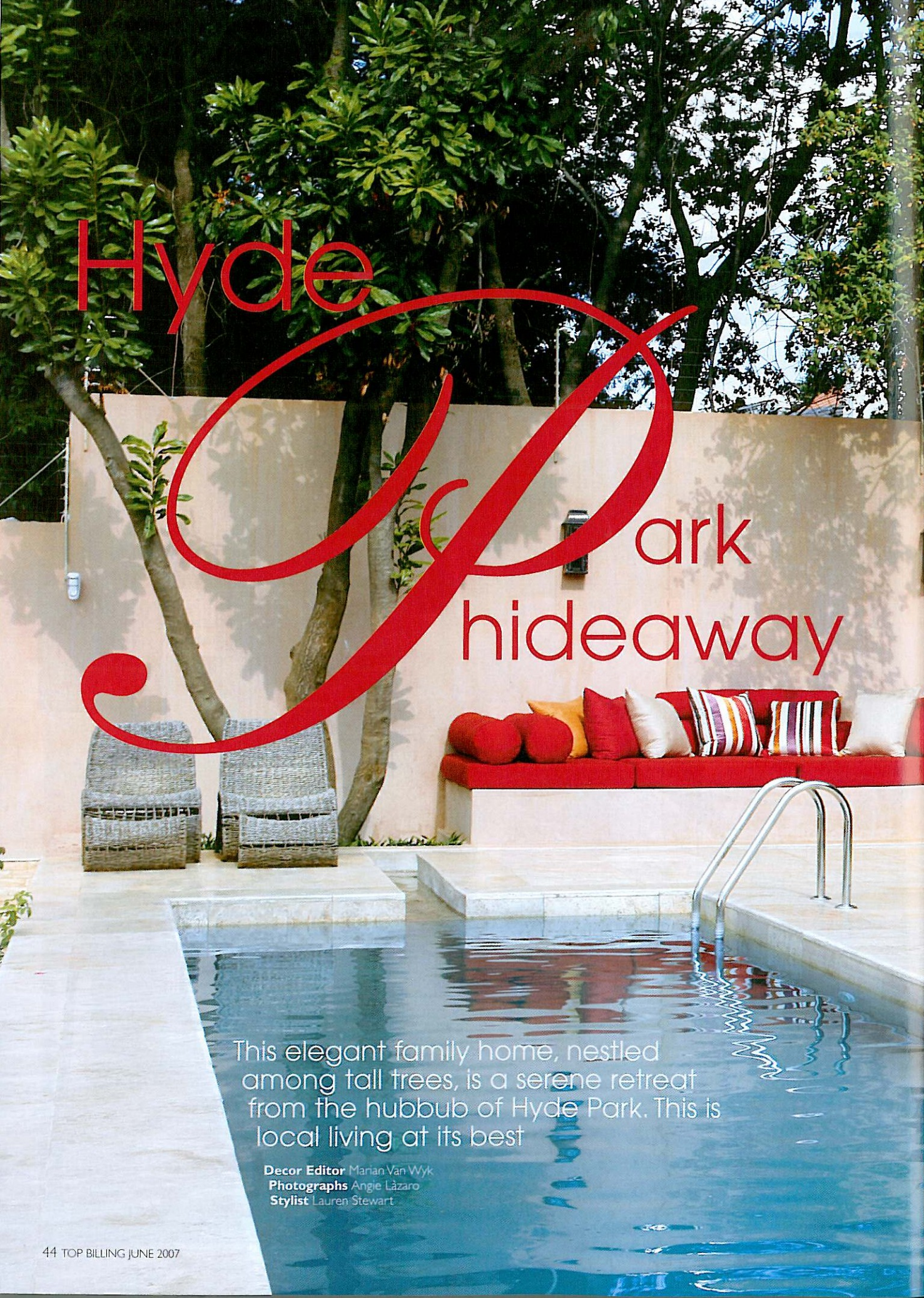
EQUILIBRIUM
studio

694 Downie Street
Deermead
Pretoria 0084

Tel 012 329 2949
Fax 012 329 4556



WIN LUXURY TAPS FROM COBRA WORTH R25 000

A photograph of a backyard pool area. In the foreground, a swimming pool with blue water is visible. To the right, a red sofa with several colorful pillows (red, yellow, white, and striped) sits on a raised platform. To the left, two wicker chairs are positioned. The background features a light-colored wall and several tall, leafy trees. A large, stylized red graphic element, resembling a thick brushstroke, is overlaid on the image, starting from the left and curving across the middle. The word 'Hyde' is written in red, sans-serif font in the upper left, and 'Park' is written in the same font to the right of the graphic. Below 'Park', the word 'hideaway' is written in a smaller, red, sans-serif font.

Hyde

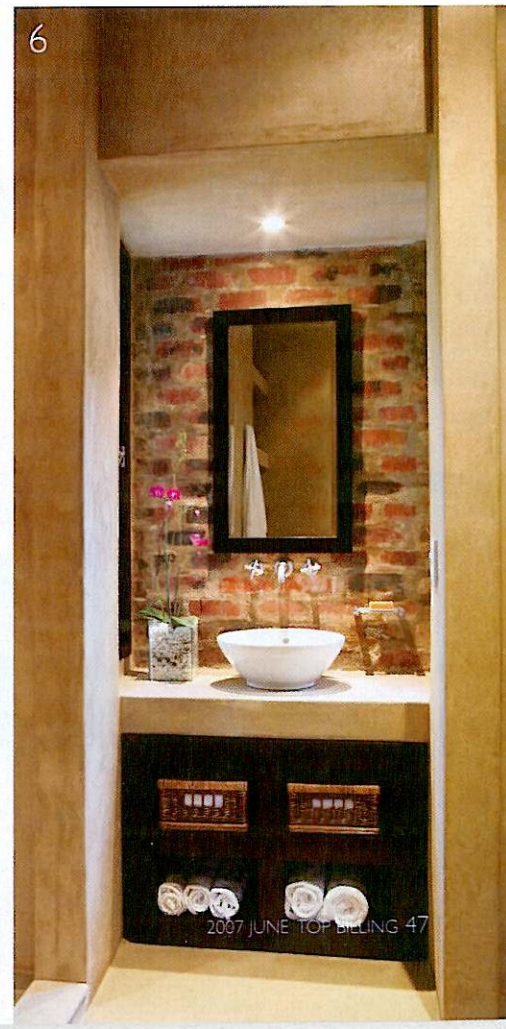
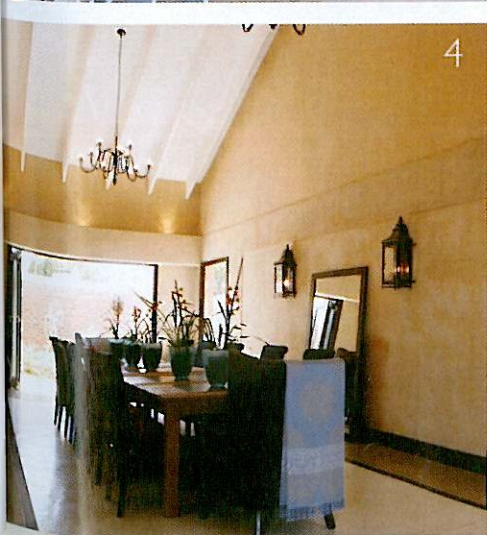
Park
hideaway

This elegant family home, nestled among tall trees, is a serene retreat from the hubbub of Hyde Park. This is local living at its best

Decor Editor Marian Van Wyk
Photographs Angie Lázaro
Stylist Lauren Stewart

Decor tips

1. Turn an awkward outdoor corner into a secret garden with a water feature, like this one next to the main bedroom.
2. Contrast is important. Decorator Heather Welham gave these mahogany chairs a new lease on life by having them painted in a light colour, which contrasts beautifully with the dark joinery.
3. Choose an accent colour for the whole house. Heather worked with red, touches of which can be seen in every room.
4. Wrought iron light fittings from Gatehouse, a 200 year-old monks' table from La Grange and the terrazzo floor laid by Cemcrete complement the rich textures and create a lived-in feeling in this new home.
5. Plan your garden in such a way that it creates a 'picture' through each window.
6. Texture from these red bricks creates atmosphere. The other walls are finished with Cemcrete's Satin Creed.





Understated colours
are complemented by
red accents

Scatter cushions: faux suede (R100 each), silk (R160 each), floral embossed (R199 each), all Woolworths; mohair blanket (R1 249), Loads of Living

Suppliers' details

Architect: Sue Clark, Equilibrium Studio
Decorator: Heather Welham,
Portfolio Decor

Light fittings: Gatehouse
Furniture (selected pieces only): I lead
Interiors and La Grange

Fabric: St. Leger & Viney, Mavromac

• See our buyer's guide on the
following page for contact details

